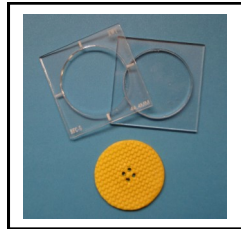


# Directions for use with any ArtWay Shape Frame Make Buttons, Beads, Charms, and Pendant Shapes Precise and Perfect Everytime



**Have Fun!**  
Have precise control with consistent results making Buttons, Beads or Pendant shapes.



**1** Press your clay into the Frame Plate (Dusting your work surface with cornstarch it will help avoid Sticking). A Mylar work surface comes with the ArtWay Templates sets.



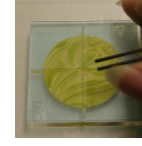
**2** Skim off the extra thickness of clay to the level of the Frame Plate using your blade or rib tool. Flip the Frame Plate over to smooth both sides. Choose which is the back and sign. Choose the front and decorate it.



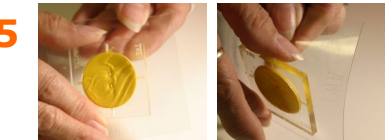
**3** Dust your clay with cornstarch and press your Photopolymer Impression Plate texture or texture of choice into the clay.



**4** To create button holes: Use the specially designed hole templates to align your precise button holes. There are two Hole Template Styles Sets for buttons, beads, pendants or charms.



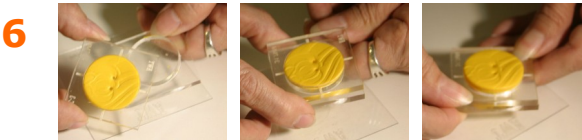
**5**



Gently remove mylar work surface from under the Frame Plate while keeping the clay inside the frame.

If you are using "Metal Clay"  
Let the product dry in the Frame  
You may not need the Pusher  
Plate to lift out your shape.

**6**



Place the Pusher Plate under the Frame Plate and align the acrylic plate edges together.

**7**



When you PUSH the acrylic plate pieces together the acrylic will make a "click" sound.

The Pusher Plate has lifted your clay piece up and out of the Frame Plate.

**8**



Slide your rib tool or blade under the clay button on the acrylic surface. Lift and remove to cook your clay creation.

**\*Multi-Hole Templates can be used before using the Pusher Frame and are sold separately  
Twin Hole Placement, Quad Hole Placement and Universal Grid Hole Placement are available.**