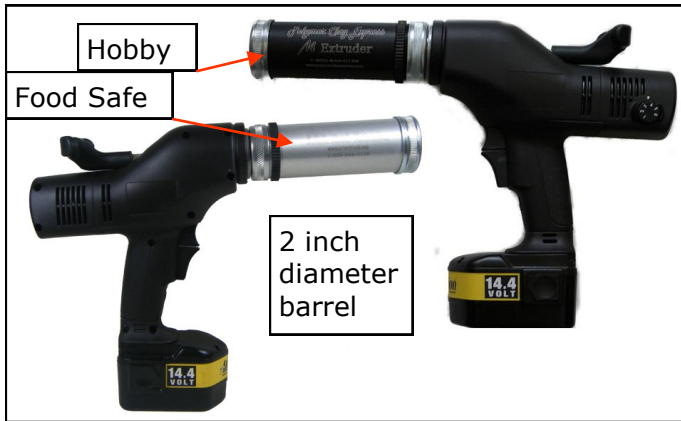
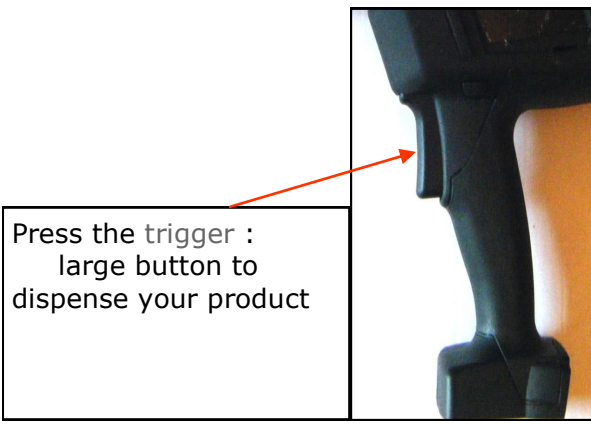


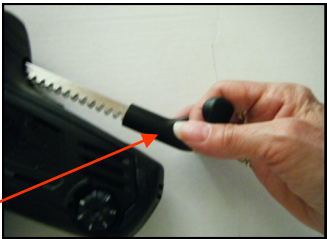
# ArtWay A.C.E. Cordless Extruder with 1 button control



Order an Accessory  
1 inch Barrel and  
then  
use 1 inch disk



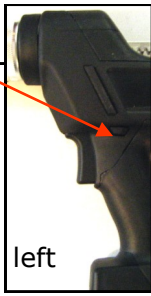
Press the trigger :  
large button to  
dispense your product



To move the rod:  
Grab handle and pull back on the lever  
  
The barrel is open and available to load product



Press the small button  
on the left side of the  
handle to lock the  
trigger.



left

Press the small button  
on the right side of handle  
to unlock the  
trigger.



right

Set the dial on  
#6 for  
Successful  
extrusions



Slide battery on to charge  
Do not store your battery on your extruder  
Do not store your battery on the charger

