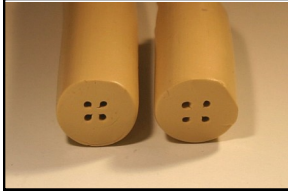
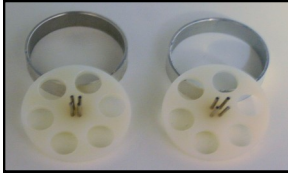
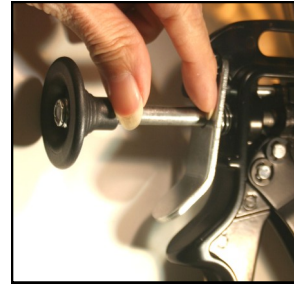


Quad Pin Coring and dispensing procedure



Close Placement or Wide Placement

Choose the placement by placing the design disk over the quad pin coring tool.
The pins should be centered inside the desired design shaped disk.



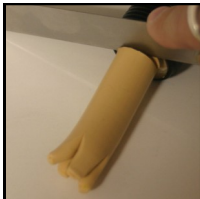
*As you begin to extrude your clay, notice the clay will start to come out of the barrel separated. *

***IMMEDIATELY Pinch the clay together and continue to squeeze the handle. ***

*As you squeeze the handle, notice the position of the rod.

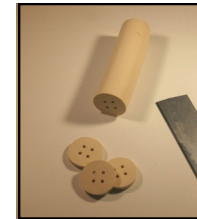
*You will feel resistance as the quantity of clay has been completely dispensed.

***STOP at least 1 1/4 inch before the knob hits the silver lever. ***



As you prepare to cut the log of clay, carefully slide the blade around the log.
You will feel the pins.

Rotate the blade to cut through the clay then gently pull the cut log of clay away from the pins.



Roll the log of clay on the table surface as you cut a clean slice the desired thickness for each of your buttons.

Avoid pressing too hard to smash or distort your 4 button holes.