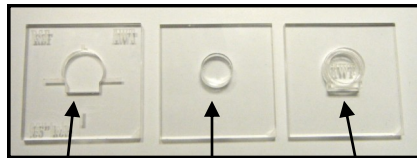
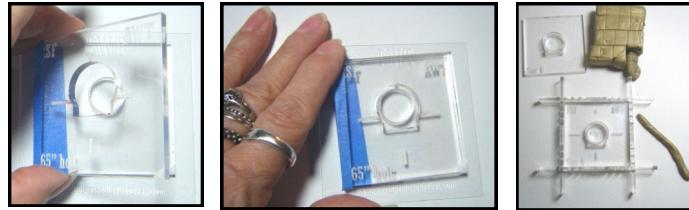


# ArtWay Tools Ring Shape Frames

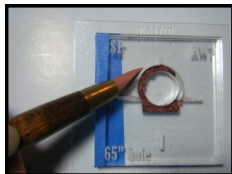


Frame Plate      Core Plate      Pusher Plate



Place the Frame Plate over the Core Plate.  
Use low tack tape as a hinge or use the Shape Frame Holder to assist in proper placement.

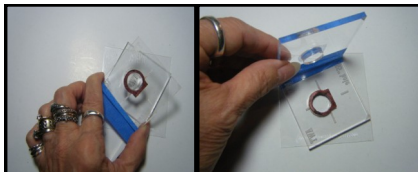
For best results dust corn starch in the void to prevent polymer clay from sticking.  
Use Badger Balm or oil when using metal clay.



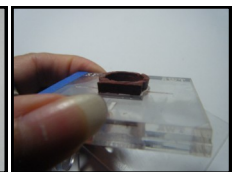
Fill the void with a snake of clay.  
A rubber tipped tool will assist filling the void evenly.



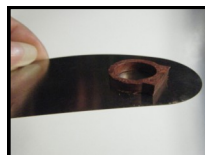
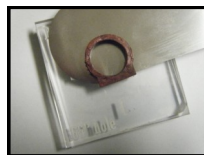
Use a metal rib tool or a blade to skim off the extra clay and level it to the Frame surface.  
Remove the Shape Frame Holder, and turn the sandwiched pieces over and look to insure the ring void is completely filled.



Gently separate your Frame Plate and Core Plate.  
The clay ring must remain attached inside the Frame Plate.



Line up your Pusher Plate behind the Frame Plate.  
Push the Plates together which will lift the clay ring to the surface.  
\*Metal clay can be allowed to dry in the Shape Frame.  
Only a hair dryer should be used to speed up the drying time.



Remove your clay ring with the rib tool on to your oven tray to avoid distorting your piece.  
Cook your clay ring following clay brand cooking temperature instructions.

- \* If using metal clay allow your piece to dry.
- \* If using metal clay refine the surface prior to firing.
- \* If using metal clay remember that shrinkage does occur and consider the shrinkage when choosing the size of your Ring Shape Frame.

Polymer clay pieces can be cooked multiple times and imperfections can be patched to refine the surface.

For strength and durability use the oven temperature for your brand of clay and cure for no less than 30 minutes.