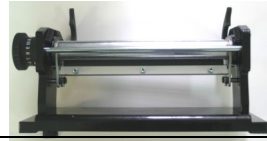


ArtWay D.R.E.A.M.

The Removal of Scraper Blades for cleaning or replacement is Safe and Simple

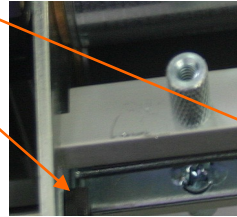
Begin by laying your D.R.E.A.M Machine on it's side, crank handle on the right.



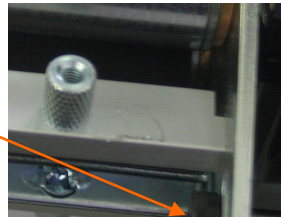
All screws and bolts should be tightened with pliers. This ensures the blades remain in position to handle the extreme pressure of all the thickness settings.

Step 1

On the dial and crank handle side of your Dream Machine, unthread the front set of black bolts. Remove the bolts and set them aside.



Left side

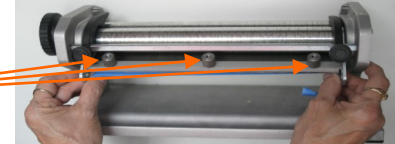


Right side

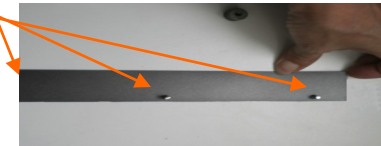
(hand crank is on the right)

Step 3

Unthread all three screw heads.

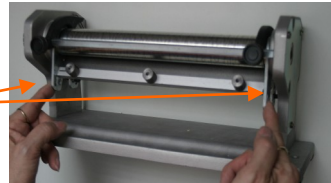


The tiny screws are solder tacked in place so they will not fall out and get lost.

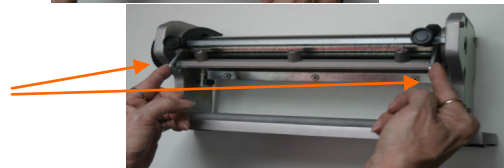


Step 2

Place fingers on both sides of the bar,

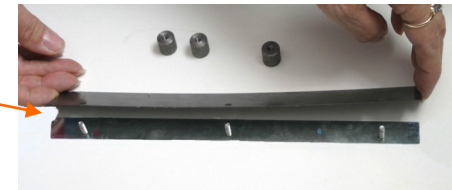


and rotate the bar up.

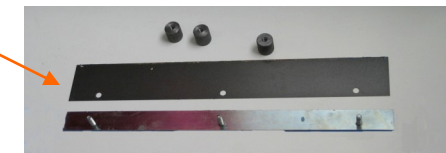


Step 4

Separate the blade from the blade support.



Wipe the surface of the blade and blade support with a dry paper towel.



Turn the machine over and repeat steps 1-5 to remove the other scraper blade.